

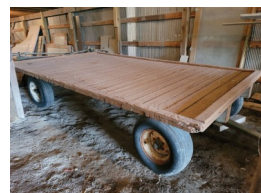
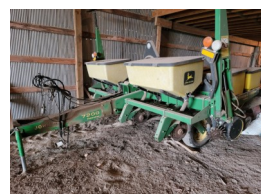
# DISPERSAL AUCTION

Saturday September 30th, 2023 9:00 AM

264 E. 2100 Rd. Wellsville, KS 66092

Directions: Hwy 56 between Wellsville (K-33) & Baldwin City (Black Jack Park), N on 2100 Rd 1 mi.  
WATCH FOR SIGNS.

**Auctioneer's Note:** Previewing will be Friday Sept 29 from 11AM to 3PM. After many years in the business, Voigt's Greenhouse is liquidating their wholesale & retail business. All greenhouse & produce related equipment/supplies/inventory will be auctioned to the high bidder. 2 rings running. Please make plans to attend.



## TRACTORS & EQUIPMENT

3 nice, clean, low hour tractors always shedded & serviced-2020 Kubota M4-071 Deluxe tractor w/LA1154 front end loader & UltraGrand Cab II, PS, 4WD, 73hp, diesel, hydraulic shuttle, 214 hrs; 2021 Kubota LX2610HSD tractor, 4WD, 25hp, PS, hydrostat, 3-cyl liquid cool dsl, loader ready, 60 hrs; 2021 Kubota B2601HSD 4WD tractor, 25hp, PS, hydro, 3-cyl dsl eng, Cat 1 3pt hitch, 540 PTO, loader ready, 106 hrs; 3pt Land Pride RTR1274 roto tiller, 74" reverse-till rotation, like new; 3pt Land Pride RTR1258 58" reverse-till rotary tiller, like new; John Deere 7200 Conservation 4-row MaxEmerge 2 vacuum planter; 3pt Land Pride FSP-500 seeder/broadcaster/spreader; 3pt Land Pride 4' land leveler; King Kutter middle buster; JD 3-16 semi-mount 3-bottom plow; 300 gallon PT sprayer w/24' booms & pump; 3pt PTO driven mist blower; 5 4-whl farm/hay wagons; custom built wooden stair unit for easy/safe wagon seating; wagonful of John Deere parts for tractors & machinery; Stihl chainsaws, 2-MS 290, 1-MS 291; Country Tuff 22T log splitter on whls; more.

## GATOR, MOWER, GREENHOUSE EQUIPMENT & SUPPLIES

2015 John Deere TX4X2 Gator utility vehicle, gas, elect dump bed, 1035hrs; JD 777 ZTrak Commercial 72" w/7 Iron II deck; WinPower 25kw PTO driven generator, 540 PTO; 3 walk-behind Troy-Bilt Big Red Horse tillers; LawnBoy 20" push mower; several string trimmers & backpack mist blowers; Titan HD trash pump; Northern Star trash pump w/Honda 5.5 motor; several other trash/water pumps, suction & discharge hoses; submersible utility pumps; 3 rolls greenhouse plastic, 2-68", 1-57"; 2 Mantis mini tillers, as is; 6 rolls drip line, NIB; flatbed mesh deck steel wagons; stacking vented crates incl 300+ collapsible & non-collapsible, 24x16x7, 150+ deeper 24x16x9, many folding deep, medium & shallow-same size, 250+ dolly trays/plastic storage, 16x24; 100s & 100s of greenhouse black plastic pots/containers incl square, round-all different sizes; 500+ waxed peach boxes-25# capacity; assorted produce boxes-folding; many 5-gallon buckets; many bushel baskets, some peck & half-peck; 75+ empty cattle mineral tubs; wire hanging baskets; tomato cages & clips; 100+ used steel posts, various lengths; much rebar cut various stake lengths; wagonful hardware used in greenhouse operation; garden hoses, many new; hose couplers & related; garden tools; non-restricted garden chemicals incl 50bags Berger BM7 bark mix, 18bags BM Custom Blend, 35bags Osmocote CR 14-14-14, 20bags Preen, 25bags Turf Nutrients, others; misc.

## TRAILER, SHOP EQUIPMENT, TOOLS & MATERIALS

53' reefer trailer minus refrig unit, has title; 10'x4'x4' metal forklift man basket; Titan High Performance 8000 industrial generator, 120+240v; Titan Industrial HD Commercial dual tank air compressor; Ridgid dual tank portable air compressor; small air compressor; Ridgid Tristand pipe bender w/chain vise; AC Delco engine hoist, 1 other; U-Lift 10T hydraulic floor/pallet jack; 2 hand pallet jacks 5500# w/1 needing repair; many wood pallets; cutting torch set; welding supplies incl gas bottles, wire, helmets, gloves, leads; Target Portasaw masonry saw; Makita cut-off saw; hydraulic press; drill press; propane heaters incl 5 Master brand; air hose reel; electric & hand tools; several small toolboxes; gas cans-assorted types & sizes; Delta pickup bed tool box; several Louisville fiberglass step & extension ladders; wagonful of nuts, bolts, hardware; wagonful of electrical supplies incl rolls of electrical wire & motors, some painting & plumbing; many extension cords; shop vacs; shop manuals incl John Deere; 40"x7' aluminum dock plate; 10+ sheets T1-11 siding; 4 sheets 3/4 plywood; cedar boards; treated lumber; windows & doors; more.

## CYCLE, RETAIL DISPLAYS, FIXTURES, INVENTORY, VINTAGE

Vintage 1974 Honda CL200 Scrambler motorcycle; stainless steel work table, 36x60x36; assortment of folding tables incl poly, several sizes; 4'x40"x8' slant top boxed wooden produce displays-4 units; 2-4'x8' display table tops, only; 3-tier wooden display shelves; 2-part retail counter each 8'; macro bin; hanging scales; 4 sets digital produce scales; signage; HD air circulators/fans; many assorted trash cans; 2 wooden picnic tables; gardening books; vintage incl antique grain dolly, grinding stone w/seat, reel mower, hand cultivator, M01 152MM single cartridge wooden ammo box, pitcher pump, old trunks, beer steins; cabinet hardware incl hinges & handles; chest freezer; cabinets; 3-sp girl's Western Flyer bicycle; horse tack; misc items not listed.

**William (Bill) Voigts, owner**

Anything designated day of sale takes precedence over any advertising. All items sell as is, where is, without warranty, expressed or implied, known or unknown. TERMS: Cash or approved checks & credit cards accepted.

Not responsible for accidents.

*Please Come!*

**Branden Otto, auctioneer 913-710-7111 [www.ottoauctioneering.com](http://www.ottoauctioneering.com)**